



## Message to the NESA community

Dear NESA investigators and collaborators,

With pleasure we present to you the second edition of the Netherlands Experimental Stroke Alliance (NESA) newsletter. Already a year has passed since the last NESA meeting, which was a great success. At the moment we are planning the 4<sup>th</sup> NESA meeting, which will be held autumn 2023 to continue collaborations and talk about advancements in experimental stroke research in the Netherlands. Please let us know if you want to add someone who is new in your group, to the [mailing-list](#) for this event.

We look forward to seeing you at the 4<sup>th</sup> NESA meeting!

Aladdin Taha

Inge Mulder

Jeannette Hofmeijer

Rick Dijkhuizen

## Kick-off CONTRAST 2 - IMPULSE

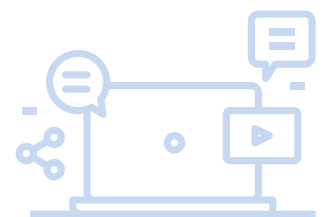
On 24 April, the kick-off of the CONTRAST-IMPULSE program was held with a meeting in Doorn together with over 80 Stroke researchers. This program is a follow-up of the CONTRAST project supported by the Heart Foundation and the Brain Foundation, in which all University Medical Centers in The Netherlands are involved, with the ambition to increase the chance of a good recovery after a cerebral infarction, cerebral haemorrhage or subarachnoid haemorrhage.

The CONTRAST consortium has an integrated research program to develop and evaluate new treatment strategies for acute ischemic stroke, intracranial haemorrhage (ICH) and subarachnoid haemorrhage (SAH) in preclinical studies, and a series of complementary RCTs and registries.

At the Kick-off meeting, Ed van Bavel presented the preclinical and experimental work package that aims to

unravel the cascade of secondary events after recanalization, identify new mechanism-based biomarkers of futile recanalization and reveal the effects of combination treatment with neuroprotective agents.

For more information on pre-clinical studies in CONTRAST-IMPULSE please contact work package leaders Rick Dijkhuizen or Ed van Bavel



## AMICE

Experimental stroke studies frequently involve preclinical imaging techniques. Recently, a national collaborative platform, called AMICE (Advanced Multimodal Imaging Centers), has been formed to reinforce the preclinical imaging infrastructure in the Netherlands and to build a shared nation-wide network of expertise, people, equipment, and data. All Dutch preclinical imaging centers participate in AMICE for full-scale, collective, and synergistic collaboration. The AMICE platform may be useful for NESAs members interested in imaging studies, specifically for efficient exchange of knowledge, best practices, protocols and data. For more information on AMICE, please contact Rick Dijkhuizen.

## Questionnaire

As a follow-up to our Young-NESA session last year, we would like to make an extension to the website and include an overview of the models and techniques used in each lab. This can be used when looking for collaborations and new project ideas and so stimulate interaction between NESAs members. Therefore, we ask every lab to fill out the questionnaire using the link below. Only one member per PI has to fill out the questionnaire, as long as all models/techniques are included.

[NESAs Questionnaire; Research Techniques](#)

## www.nesa.science

For those who have not seen it yet, go check out the website with our mission and objectives. It also gives an overview of the participating institutions, research groups, PIs, and early career investigators. In case of any website-related questions, suggestions or updates, please contact Inge Mulder via [i.mulder1@amsterdamumc.nl](mailto:i.mulder1@amsterdamumc.nl)

